

Model type:
AWD121NA

Commercial code:
35356

General notes

Technical Documentation guidelines

You can find herewith some generic information to simplify consulting of technical documentation:

1. Models of same range share the same exploded views, which report the richest set of spare parts: generally, a model does not necessarily have a related spare part for each particular shown on exploded views.
2. Some spare parts can not be represented directly on the exploded views (instruction booklets, specific kit, etc...). You can find those codes in the spare parts list with the same reference of particular where spares are installed or with references 099, 999. Instruction booklets, once managed, appear with 000 reference.
3. On the higher right site of each exploded view there is a serial number which indicates the beginning of the production of certain range: some models might have more than an exploded view for a given category, each distinguished by a different serial no. and linked to another spare parts list. In this case, serial no. is required to supply the right spare part code. Exploded view to be considered is the one with a more recent serial no. but previous than the one of the model that needs assistance.
4. Exploded views might require further updates even after publishing. Addition of new spares will go on following the already existing numeration references. Revision number of an exploded view is shown into last four digits of serial number into upper right hand corner.
5. The spare parts list associated to an exploded view shows related codes of spares managed for a certain model; for each spare part other informations are available:

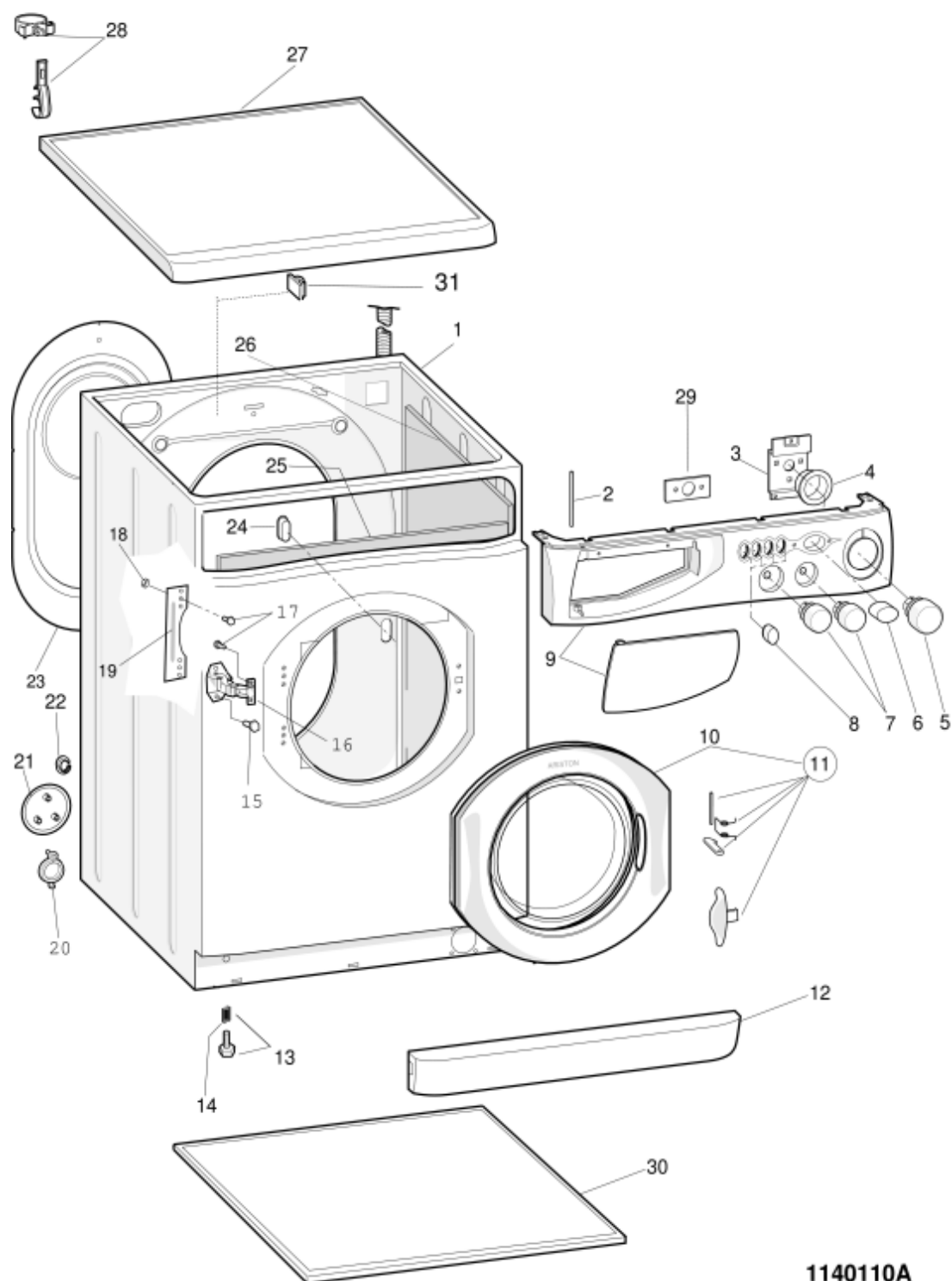
REF: reference no of spare into a table; SUBSTITUTE: list of spare(s) which can replace a code but that keeps same functional characteristics

INDUSTRIAL CODE: list of variables of a model (shown into model label) where such spare is used; NOTICE: code of information(s) to refer to complete technical intervention, track for changes or to find correct spare part code.
6. Some notices, into a same section are generic therefore cannot be directly linked to a spare part. In order to assist a model in the best way as possible, it is helpful to pay attention to all notices and constantly verify documentation updates
7. Technical documentation cover shows model name and its commercial codes

1140110A

Exploded views

Matr40915.0003



1140110A

1140110A

Spare parts

list

| Ref. | Code | From | To S/N | Substitute | Description | Notice | Industrial |
|------|-----------|------|--------|---------------|----------------------------------|----------------------|-------------|
| 000 | C00116122 | | | | user instruct.bookl gb-es-f | | |
| 001 | C00090582 | | | 1 x C00116622 | cabinet white | n1040230 n1040359 | 80353560000 |
| 001 | C00116622 | | | | cabinet white pw | | 80353560900 |
| 002 | C00065186 | | | 1 x C00091882 | pivot pin - drawer front 108.5x5 | | |
| 003 | C00064784 | | | | bracket - timer support | | |
| 004 | C00099647 | | | | knob timer disc 'awd120na' | | |
| 005 | C00065180 | | | 1 x C00064506 | wash timer knob white | | |
| 006 | C00064509 | | | 1 x C00117965 | pushbutton white 0/i | n1040359 | 80353560000 |
| 006 | C00117965 | | | | pushbutton white pw 0/i | | 80353560900 |
| 007 | C00099637 | | | | thermostat knob white awd120na | n1040359 | 80353560000 |
| 007 | C00099638 | | | | white dry timer knob awd120na | | 80353560000 |
| 007 | C00116608 | | | | white knob thermostat pw | | 80353560900 |
| 007 | C00116609 | | | | knob dryer white pw awd120na | | 80353560900 |
| 008 | C00064507 | | | | pushbutton white | n1040359 | 80353560000 |
| 008 | C00116625 | | | | pushbutton white 0/i | | 80353560900 |
| 009 | C00116105 | | | | control panel + handle awd121na | | 80353560000 |
| 009 | C00116805 | | | | control panel + handle pw | | 80353560900 |
| 010 | C00082825 | | | 1 x C00116624 | door frame assy | | |
| 011 | C00065250 | | | 1 x C00116580 | door handle kit | n1040359 | 80353560000 |
| 011 | C00116580 | | | | door handle kit pw lb2000 | | 80353560900 |
| 012 | C00110325 | | | 1 x C00116552 | plinth white | n1040359 | 80353560000 |
| 012 | C00116552 | | | | plinth white pw | | 80353560900 |
| 013 | C00087084 | | | | foot - m8 h = 2,3 cm | | |
| 014 | C00083828 | | | | spring for foot d =11 mm h = 8,5 | | |
| 015 | C00065185 | | | | bolt m4,5 x 11 | | |
| 016 | C00064541 | | | | hinge assy-outer case/door 180 | n1040349 | 80353560000 |
| 016 | C00115666 | | | | zama hinge 150° | | 80353560900 |
| 017 | C00012687 | | | | self-tapping screw hi-lo 3,5x13 | | |
| 017 | C00074149 | | | | bolt m4x9 tesfr | | |
| 019 | C00064539 | | | | hinge plate door | | |
| 022 | C00065871 | | | | blanking plug | | |
| 023 | C00046666 | | | | collar for drain hose | | |
| 023 | C00099313 | | | 1 x C00116923 | rear cover - white | n1040359 | 80353560000 |
| 023 | C00116923 | | | | rear cover - white pw | | 80353560900 |

1140110A list

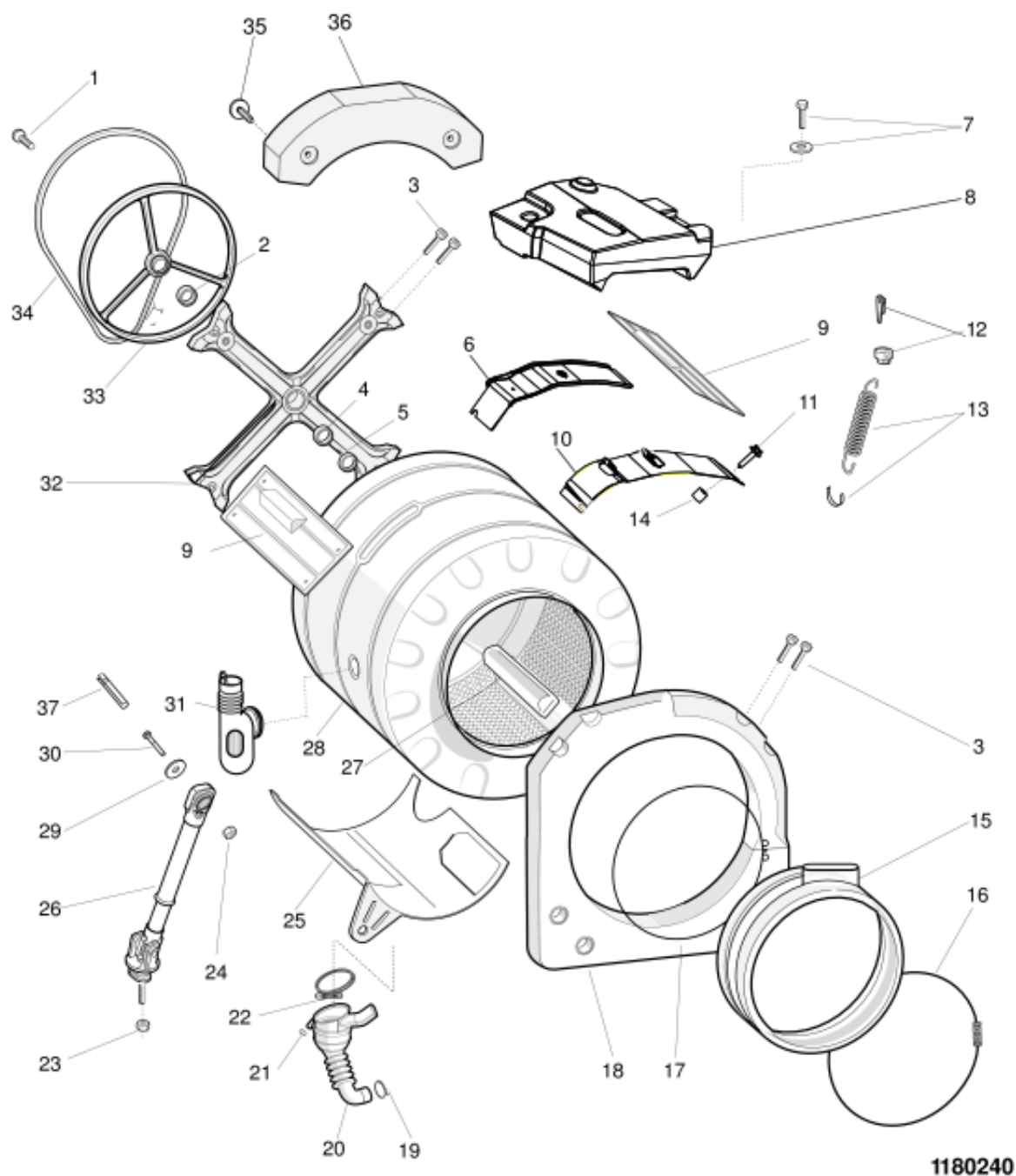
Spare parts

| Ref. | Code | From | To S/N | Substitute | Description | Notice | Industrial |
|------|-----------|------|--------|---------------|-----------------------------------|----------|-------------|
| 024 | C00084817 | | | | blanking plate-rear(test plug) | | |
| 027 | C00112436 | | | 1 x C00116618 | top white + plate ariston | n1040359 | 80353560000 |
| 027 | C00116618 | | | | worktop - white pw aw121na | | 80353560900 |
| 028 | C00046667 | | | | wiring stop | | |
| 028 | C00064550 | | | | drain hose holder | | |
| 028 | C00091904 | | | | cable clamp hose | | |
| 029 | C00099627 | | | | schakelaarplaat on-off 'awd120na' | | |
| 030 | C00090932 | | | | base cabinet plate usa normal ph | | |

1180240

Exploded views

Matr. 30926.0004



1180240

1180240

Spare parts list

| Ref. | Code | From | To S/N | Substitute | Description | Notice | Industrial |
|------|-----------|------|--------|--|------------------------------------|----------------------|------------|
| 001 | C00064786 | | | 1 x C00143260 | bolt m8x23 torx tefl | | |
| 002 | C00013563 | | | | bearing 25 x52 x 15 6205-2z | | |
| 003 | C00064785 | | | | bolt m8x22 tb6lt | | |
| 004 | C00002591 | | | | bearing 20x47x14 | | |
| 005 | C00096186 | | | | standard oil seal cv4 30 x 52/65 x | n1040300 n1040326 | |
| 006 | C00080651 | | | 1 x C00032847 1 x C00114387 1 x C00114390 1 x C00145190 | rear support | | |
| 007 | C00088408 | | | | bolt + washer | | |
| 008 | C00087811 | | | | upper counterweight 8,2 kg | | |
| 010 | C00080650 | | | | front support | | |
| 011 | C00080652 | | | | bolt m8x36 tefl. zig. p/p | | |
| 012 | C00064515 | | | | anchorage pad - suspension | | |
| 013 | C00080660 | | | | suspension spring - tank | | |
| 014 | C00080653 | | | | spacer | | |
| 015 | C00110429 | | | | door bellows seal wd 28-28 cm | | |
| 016 | C00064546 | | | | clamping ring - bellows seal front | | |
| 017 | C00064547 | | | | bellows clamp (tank front) | | |
| 018 | C00092178 | | | | front counterweight | | |
| 019 | C00092411 | | | | hose clamp | | |
| 020 | C00092174 | | | | hose tank to filter oko | | |
| 021 | C00092412 | | | | hose clamp | | |
| 022 | C00091148 | | | 1 x C00094908 | clamp d=79 mm | | |
| 023 | C00065152 | | | | nut romob m6x22x1,5 | | |
| 024 | C00047136 | | | 1 x C00144571 | nut romob m8 | | |
| 025 | C00093848 | | | | cradle outer- set | | |
| 026 | C00093885 | | | | shock absorber 120 n 8,15 mm | | |
| 027 | C00064789 | | | | wash paddles (extractable) 46 l | | |
| 028 | C00094281 | | | 1 x C00094275 1 x C00094280 | outer- set 46 l. evo ii | n1040300 n1040371 | |
| 030 | C00093750 | | | | bolt zink m8x40 | | |
| 031 | C00092273 | | | | hose dispenser to tank | | |
| 032 | C00096077 | | | | bearing spider assembly | n1040300 | |

1180240

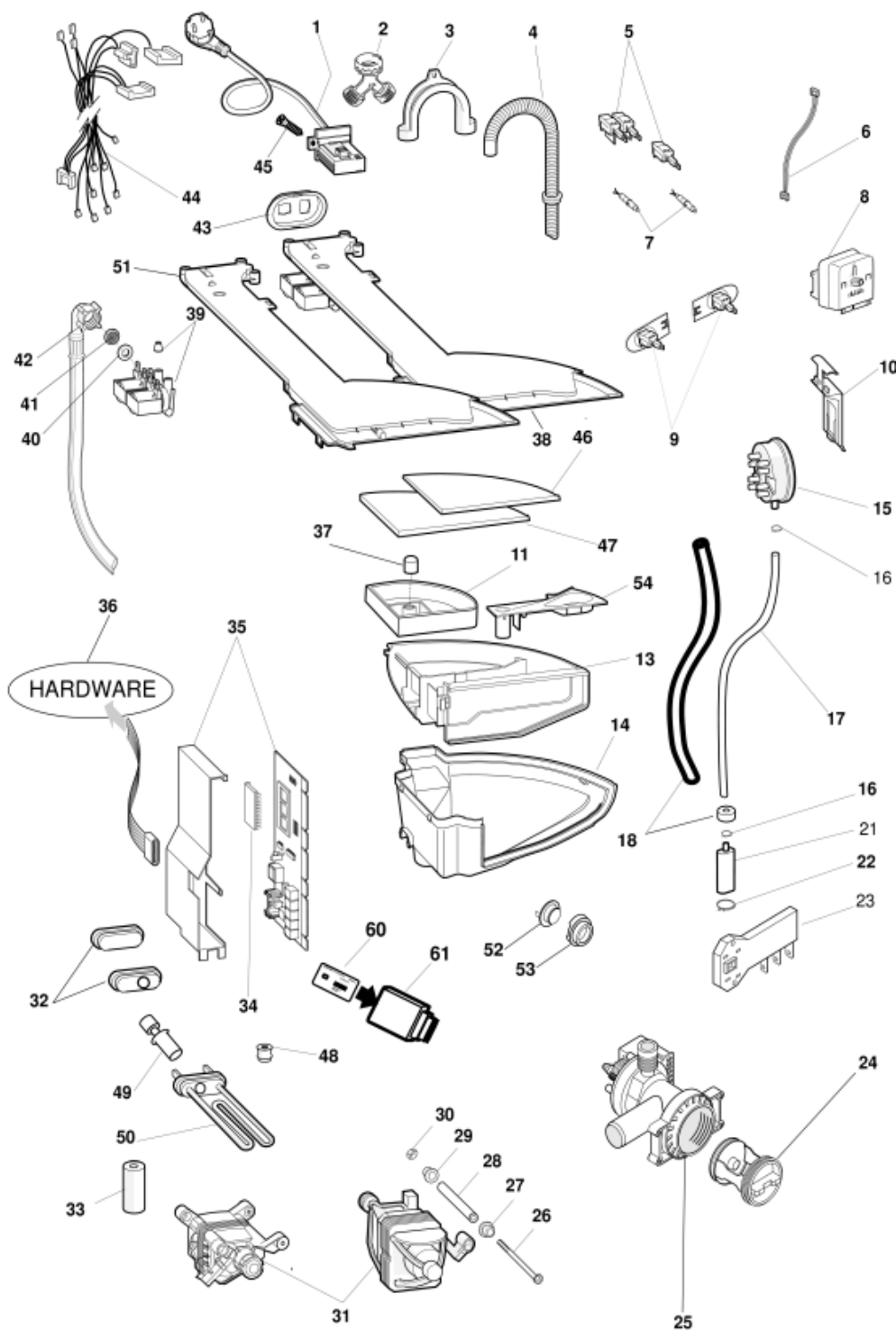
Spare parts list

| Ref. | Code | From | To S/N | Substitute | Description | Notice | Industrial |
|------|-----------|------|--------|------------|-------------------------------|--------|------------|
| 033 | C00074211 | | | | drum pulley d=210 mm h=20 mm | | |
| 034 | C00074218 | | | | belt l=1046 - 1051 mm h8 (hl) | | |
| 099 | C00001109 | | | | loctite 270 10 gr. | | |
| 099 | C00033026 | | | | amblygon grease ta 100 gr. | | |

1180320A

Exploded views

Matr. 40915.0003



1180320A

1180320A

Spare parts

list

| Ref. | Code | From | To S/N | Substitute | Description | Notice | Industrial |
|------|-----------|------|--------|---------------|-------------------------------------|----------|------------|
| 001 | C00098928 | | | | supply cable 1,50 mt usa | | |
| 003 | C00019902 | | | | plastic -u- to make drain hose | | |
| 004 | C00091775 | | | | drain hose to sink | | |
| 005 | C00088394 | | | | push button switch na idc | | |
| 005 | C00090218 | | | | deviator switch (on-off) | | |
| 007 | C00086663 | | | | pilot light red 12 v rast 2.5 | | |
| 008 | C00090195 | | | | programme select elbi 1665 rast | | |
| 009 | C00085195 | | | 1 x C00143096 | potentiometer 8 pos. idc rast 2,5 | | |
| 010 | C00064537 | | | | support - pressure switch | | |
| 011 | C00046152 | | | | additive container | | |
| 013 | C00046148 | | | | soap dispenser drawer (rotary) | | |
| 014 | C00092176 | | | | dispenser body | | |
| 015 | C00090200 | | | | pressure switch 1l 90-65 | | |
| 016 | C00092412 | | | | hose clamp | | |
| 017 | C00092170 | | | | pipe pressostat l= 470mm. evo ii | | |
| 018 | C00098754 | | | | anti-vibration hose (foam) l= 330 | | |
| 021 | C00092173 | | | | air trap x oko | | |
| 023 | C00090199 | | | | door interlock rold da rst 5usa idc | | |
| 024 | C00045027 | | | | filter element kit (hl) | | |
| 025 | C00112504 | | | | self cleaning pump 120v 60hz | | |
| 026 | C00074152 | | | | bolt m6x30 | | |
| 027 | C00074151 | | | | rubber bush - motor mount | | |
| 028 | C00074153 | | | | spacer motor support l= 187 mm | | |
| 030 | C00040932 | | | | self locking nut m6 | | |
| 031 | C00090196 | | | | motor ceset mcc61 usa 6kg | | |
| 031 | C00145001 | | | 1 x C00196554 | brush motor ceset eame 6170 | | |
| 032 | C00110422 | | | | hole for heating element | | |
| 033 | C00091054 | | | | coil to protect module 2002 | | |
| 034 | C00116123 | | | | eprom evoi awd121na sw | | |
| 035 | C00109898 | | | | module (less eeprom) wd usa mdl | | |
| 036 | C00066292 | | | | insulated tweezers | | |
| 036 | C00095669 | | | | hardware key mk1 | n1040317 | |
| 036 | C00099862 | | | | serial cable lb2000 evoii - pc | | |
| 037 | C00046157 | | | | stopper detergent container | | |
| 039 | C00064534 | | | | seal - electrovale/dispenser | | |

1180320A

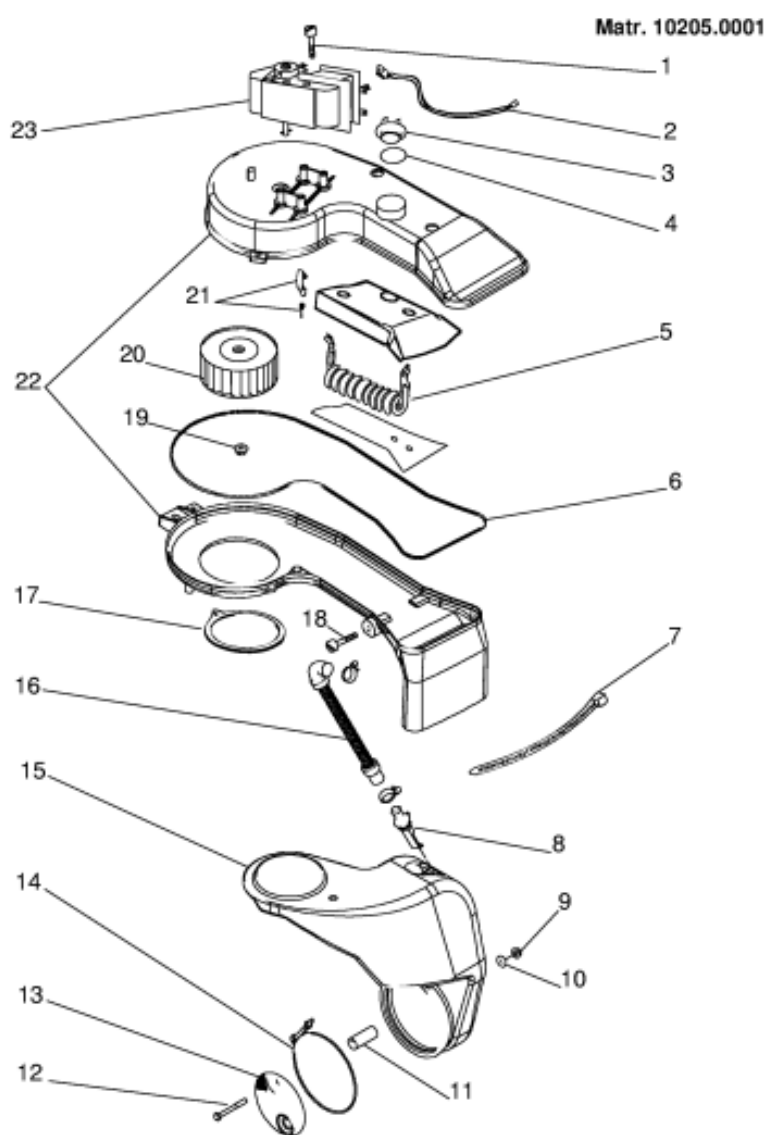
Spare parts

list

| Ref. | Code | From | To S/N | Substitute | Description | Notice | Industrial |
|------|-----------|------|--------|------------|------------------------------------|--------|------------|
| 039 | C00110452 | | | | electrovalve 1way 5,5lt hot rst2.5 | | |
| 039 | C00116117 | | | | 3-way electrovalve 1e-3u 7 l | | |
| 040 | C00005572 | | | | sealing washer-mains inlet hose | | |
| 041 | C00005781 | | | | inlet hose filter | | |
| 042 | C00112930 | | | | inlet hose with usa | | |
| 043 | C00066514 | | | | electrovalve support 2 ev | | |
| 044 | C00116106 | | | | wiring awd121na | | |
| 045 | C00092348 | | | | self-scraping screw 3,5x8 | | |
| 046 | C00099625 | | | | reading desk awd120na pr47 | | |
| 047 | C00065733 | | | | support - programme guide tbc | | |
| 048 | C00058523 | | | | pillar retainer-heating element | | |
| 051 | C00116112 | | | | hopper cover awd-na | | |
| 052 | C00080767 | | | | temperature sensor (hl) | | |
| 053 | C00014917 | | | | grommet - thermostat | | |

1180410

Exploded views



1180410

1180410

Spare parts list

| Ref. | Code | From | To S/N | Substitute | Description | Notice | Industrial |
|------|-----------|----------|----------|---------------|----------------------------------|--------|-------------|
| 001 | C00087921 | | | | screw amsp m3.5x30t.e.(s/n | | |
| 002 | C00080775 | | | 1 x C00199364 | thermal cut-out cable | | |
| 003 | C00089982 | | | | thermostat | | |
| 003 | C00098739 | | | | temperature sensor ntc rast 2,5 | | |
| 004 | C00080768 | | | | o-ring d= 27 x 23,5 x 1,78 wd | | |
| 005 | C00110433 | | | | dryer heating element 1200 watt | | |
| 006 | C00032847 | | | | blower manifold seal | | |
| 007 | C00033210 | | | | hose clamp fastex 350 mm x 7.8 | | |
| 008 | C00032845 | | | | restrictor seat | | |
| 009 | C00080960 | | | | self blocking nut m5 | | |
| 010 | C00080959 | | | | connection gasket | | |
| 010 | C00097378 | | | | connection gasket | | |
| 011 | C00080771 | | | | clip | | |
| 012 | C00080773 | | | | fixing screw for lint filter | | |
| 013 | C00080772 | | 60211... | 1 x C00143947 | lint filter | | 80353560000 |
| | | | | 1 x C00143949 | | | 80353560900 |
| 013 | C00143949 | 60212... | | | lint filter | | 80353560900 |
| 014 | C00080774 | | | | hose clamp | | |
| 015 | C00080770 | | 60211... | 1 x C00143947 | steam condenser | | 80353560000 |
| | | | | 1 x C00143949 | | | 80353560900 |
| 015 | C00143947 | 60212... | | | steam condenser | | 80353560900 |
| 016 | C00080769 | | | | hose electrovalve condenser | | |
| 017 | C00032844 | | | | seal - condenser / tank | | |
| 018 | C00038358 | | | | bolt m8x16 (dry loc) | | |
| 019 | C00032972 | | | | blower fixing nut | | |
| 020 | C00080658 | | | | blower fan for motor (087920- | | |
| 021 | C00054790 | | | | screw trilob m5 x 16 tcb t.e. st | | |
| 022 | C00087919 | | | | blower manifold kit | | |
| 023 | C00110434 | | | | dryer fan motor 115v.60hz | | |
| 024 | C00114390 | | | | fixing screw for blower manifold | | |

Notices

n1040061: Trouble-shooting.

Intervention procedure on 2000 washing machines

1. Reading the error code

The fault on the appliance is signalled via:

1. the continuous rotation of the selector knob
2. the action, for the first 4', of the electrovalve and the drain pump
3. the door becomes unlocked
4. the led flashes:

the number of flashes indicates the fault code; the code should be read as follows:

- each fast flash (2/3 flashes of the led very close together) represents one code value
- the fault code is evaluated by counting the number of flashes occurring at 3/4" intervals from one another
- stop counting when the washing machine waits the equivalent of approximately 8/9" between flashes
- the procedure is repeated by the appliance cyclically

E.g.: F03

(FIGURE NT 00)

2. Autotest

Should the washing machine not be signalling an error, you can check it using a serial key and using a particular autotest cycle, which is to be activated as follows:

1. bring the washing machine to reset position (coloured ball) for at least 5" and wait until the led flashes on reset mode
2. insert the hardware key into the serial outlet
3. position the switch situated on the key in TEST position
4. wait for the door to lock and for the selector to start turning
5. position the switch situated on the key in PC position

the appliance will carry out the following cycle:

- selector moves on up to position 0 (12h if the appliance has a delay, programme 1 if it has no delay)
- loads the wash electrovalve for approx. 10"
- loads the pre-wash electrovalve for approx. 10"
- loads the wash electrovalve and pre-wash electrovalve at the same time until the pressure switch is on full
- heats up to 30° and moves the motor in both directions
- selector moves on for 9 notches
- drains and spins
- the selector knob stops on one of the reset positions
- STOP

The test cycle can be repeated as many times as you wish following the same procedures
The test cycle can be interrupted by positioning the selector knob on one of the reset positions.
3. Intervention in the event of a Fault

In the event of a fault, the procedure to go by is as follows:

F01: Triac Short circuit

Overhaul CNE

Replace Card

F02: Blocked Motor, Short-circuited/Open Tachometry

Overhaul CNE

Overhaul Motor connector

Control CNE Continuity/Motor Connector

Control Motor Windings

Control Tachometry Windings

Replace Card

F03: Open/Short-Circuited NTC Found

Overhaul CNA

Control NTC Wiring

Control CNA/NTC Wiring Continuity

Replace NTC

Replace Card

F04: Overflow and Pressure Switch Empty found at the same time (Pressure Switch stuck on Empty)

Overhaul CN1

Overhaul Pressure Switch Contacts

Control CN1/Pressure Switch Continuity

Replace Pressure Switch

Replace Card

F05: Blocked Pump or Pressure Switch stuck on Empty Found

Overhaul CNF (pump connector)

Overhaul Pump Connector

Control Pump Filter

Control Pump Windings

Change Pump

Replace Card

F06: Selector Error (a part no. cannot be found)

Overhaul CND (selector connector)

Overhaul Selector Connector

Control Selector/CND Continuity

Control Selector Motor

Replace Selector

Replace Card

F07: Resistance Relay Stuck

Overhaul CN1

Overhaul CN1

Overhaul Resistance Connection

Replace Card

Overhaul Resistance Connection
Replace Card

F08: Resistance Missing or Pressure Switch stuck on Full Found
Overhaul CN1
Overhaul Resistance Connection
Overhaul Pressure Switch Connection
Replace Resistance
Replace Pressure Switch
Replace Card

F09: Machine Setup Error Found
Control Microprocessor Version
Ask for EEPROM Spare Part indicating Microprocessor version

F10: Pressure Switch Empty and Full or neither Empty nor Full Pressure Switch Found
Overhaul CN1
Overhaul Pressure Switch Wiring
Control CN1/Pressure Switch Continuity
Replace Pressure Switch
Replace Card

F11: Pump Feedback Missing
Overhaul CN1
Overhaul CNF
Overhaul Pump Connector
Overhaul Pressure Switch Connector
Control Pump Windings
Replace Pump
Replace Card

F12 SPECIFIC FOR LVB2000 INDESIT EVOLUTION / DIALOGIC.

F12: Lack of Display card-Main Card Communication
1. Check the effectiveness of contacts on CNC Connector Card
2. Overhaul 8-way connector on Display card
3. Check continuity of CNC-CN 8 way connector
4. Replace Main Card
5. Replace Display Card

F13: NTC wiring harness disconnected from the dryer system
1. Check the efficiency of the terminals on the CNA connector board
2. Check NTC wiring harness
3. Check the wiring harness continuity of the CNA / NTC connectors
4. Replace NTC
5. Replace terminal board

F14: Dryer connector open or not connected
1. Check the efficiency of the terminals on the CNI connector board
2. Overhaul CN1
3. Overhaul connector connection
4. Replace the board.Merloni Elettrodomestici

F15: Dryer connector is always active
1. Check the efficiency of the terminals on the CNI connector board
2. Overhaul connector connection
3. Overhaul the pressure sensor connection
4. Replace the connector

5. Replace pressure sensor
6. Replace the board

F16: Non-functioning basket block

1. Go over connector card CNC
2. Go over connector basket block
3. Control Continuity of cabling CNC / basket block and basket block supply
4. Replace basket block
5. Replace card

N.B.From Fault F01 to fault F11

These are shown by LEDs in stand by/on in LVB2000 machines Ariston/Indesit.

From fault F01 to fault F12

These are shown in a display located on the instrument panel of LVB2000 machines Evolution Indesit.

From fault F01 to fault F15

Are those that are indicated according to the version via LED stand by/on or display positioned on the Wash Dry machine Ariston/Indesit panel.

4. Replacing the card

Should you have to replace the card:

- retrieve the EEPROM from the old card
- reassemble the EEPROM onto the new replacement card (without EEPROM)

In the event, and only in this case:

- an F02 has been detected
- the above-mentioned checks have been carried out and no problems have been detected on the wiring or to the motor
- the card fitted onto the washing machine is a 12 or 20 version (the version is indicated by a label on the module-containing box with SW20 or SW12)

you should:

- fit on a new card (version 32 or above)
- fit on an updated EEPROM to request from the assistance service centre, stating the code (e.g. 80xxxxx0000 or 46xxxxx0000), the serial number and the washing machine model.

n1040242: Power card with welded eeprom.

From serial number 20304.0001, IDC power card with welded eeprom is used to ensure the perfect connection of all parts, in the Comunanza, Teverola and Brembate factories.

To replace the module with welded eeprom, it will be necessary to use the eeprom indicated in the SAT document of the model concerned.

To replace the module on a unit with welded eeprom both the SAT module and the eeprom are required, because the latter cannot be reused.

n1040349: Introduction of 150° Zamac hinge on Ariston 46 models.

From serial no. 50207.0001, all Ariston models produced in the Teverola factory (see table 001 attached) with industrial code (given on the rating plate) starting with 46, have been equipped with a Zamac hinge with 150° opening angle, code C00115666 (see Fig.001).

This modification has involved the introduction of the following items:

Code C00115670 - Complete door EVOII 150° white 27 with standard glass;

Code C00115674 - Complete door EVOII 150° white 27 with long glass;

Code C00115667 - EVOII body for 150° hinge white 27;

The premodified items are not interchangeable separately with the modified ones.

Code C00110133 - Complete door EVOII Standard 180° white 27 standard glass;

Code C00092157 - Complete door EVOII 180° white 27 long glass;

Code C00096193 - EVOII body for 150° hinge white 27;

The hinge code C00064541 continues to be used on the build-under models produced in the Comunanza factory.

| Model | Code | CABINET | | DOOR | | | | HINGE | |
|-----------------------|-------|-----------|-----------|-----------|-----------|-----------|-----------|-----------|-----------|
| | | 180° | 150° | 180° | 150° | 180° | 150° | 180° | 150° |
| | | C00096193 | C00115667 | C00092157 | C00115670 | C00110133 | C00115674 | C00064541 | C00115666 |
| AV 82 (TK) | 28479 | X | X | X | X | | | X | X |
| AVL 85 (TK) | 28480 | X | X | X | X | | | X | X |
| AV 102 (TK) | 28481 | X | X | X | X | | | X | X |
| AVL 105 (TK) | 28482 | X | X | X | X | | | X | X |
| AVD 10 (TK) | 28485 | X | X | X | X | | | X | X |
| AVL 125 (EU) | 29774 | X | X | X | X | | | X | X |
| AVL 62 (EX) | 29775 | X | X | X | X | | | X | X |
| AV 61 (EU) | 29890 | X | X | | | X | X | X | X |
| AVL 6 E (IT) | 30055 | X | X | X | X | | | X | X |
| AVL 62 (EX) 60HZ 40-F | 30062 | X | X | X | X | | | X | X |
| AVL 61 (EX) 115-60 | 30063 | X | X | | | X | X | X | X |
| AV 51 (EX) 50-60 | 30064 | X | X | | | X | X | X | X |
| AV 41 (EX) 50-60 | 30065 | X | X | | | X | X | X | X |
| AV 41 (AG) 50-60 | 30066 | X | X | | | X | X | X | X |
| AV 51 (AG) 50-60 | 30067 | X | X | | | X | X | X | X |
| AVL 86 P (IT) | 30093 | X | X | X | X | | | X | X |
| AVL 105 (SK) | 30206 | X | X | X | X | | | X | X |
| AVL 100 P (R) | 30357 | X | X | X | X | | | X | X |
| AVL 95 (AUS) | 30361 | X | X | X | X | | | X | X |
| AV 51 (EO) | 30498 | X | X | | | X | X | X | X |
| AVL 65 (PT) | 30612 | X | X | X | X | | | X | X |
| AV 102 (CSI) | 31970 | X | X | X | X | | | X | X |
| AV 40 (AG) 50-60 | 32303 | X | X | | | X | X | X | X |
| AVL 145 (DE) (TE) | 33180 | X | X | X | X | | | X | X |
| AV 42 (EX) 50-60 | 33217 | X | X | | | X | X | X | X |
| AV 52 (EX) 50-60 | 33218 | X | X | | | X | X | X | X |
| AVL 62 (EO) | 33244 | X | X | X | X | | | X | X |
| AVL 145 (EU) (TE) | 33612 | X | X | X | X | | | X | X |
| AVL 62 (KW) | 33685 | X | X | X | X | | | X | X |
| AV 62 (EU) | 33968 | X | X | X | X | | | X | X |
| AVF 10 (TK) | 33979 | X | X | X | X | | | X | X |
| AVF 8 (TK) | 34214 | X | X | X | X | | | X | X |
| AVF 149 (EU) | 34217 | X | X | X | X | | | X | X |
| AVL 135 (FR) (TE) | 34239 | X | X | X | X | | | X | X |
| AVL 140 (FR) (TE) | 34240 | X | X | X | X | | | X | X |
| AVL 14 (FR) | 34479 | X | X | X | X | | | X | X |
| AV 8 (IT) | 35974 | X | X | X | X | | | X | X |
| AV 10 (IT) | 35975 | X | X | X | X | | | X | X |

n1040359: Polar White Factory 80 (Comunanza)

From serial no. 50315.0001, the new "Polar White" colour is used on all washing machines and washer-dryers produced in

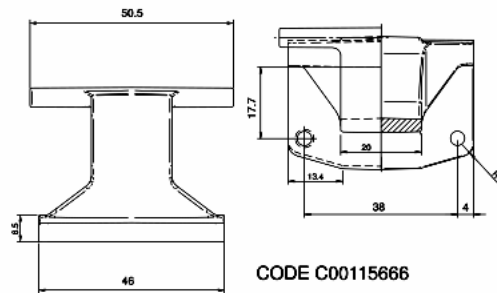


Fig . 001

factory 80 in place of White 27.

The third last number of the Industrial Code given on the rating plate of the modified models is 9 (e.g. 80286390900).

To determine the new Polar White codes, it is necessary to know the industrial code or serial number of the appliance being repaired.

The new items, which bear the initials "PW" in place of "B27", are not aesthetically interchangeable with premodification items as the whites are different. Both colours will be available for some time.

The items affected by this modification are:

Body, rear panel, top, control panel, handles, buttons, knobs, knob disc, door and plinth.

n1040371: The T4 mechanism type 4.

From serial number 30612.0001, the T4 mechanism has been introduced on some oscillating units.

The new tub units are perfectly interchangeable with the premodification ones and therefore maintain the same SAT codes.

The modification especially concerns the basket cross element and the tub cross element assembly that are specific for the new mechanism.

For servicing the products both the premodification tub cross element assembly (code 074213) and the new assembly (cod. 096077) must be managed; their use is indicated by the serial number of the relevant product.

The relevant Sat codes are:

TUBS (they maintain same SAT code as the premodification parts).

Models "Evizzati" " Serial number > 30312.0001 and < 30616.0001

SAT code 094279 TUB 46L.B5 CV5 EVO II 1200 rpm;

SAT code 094281 TUB 46 L. B5-CV5 LD EVO II 1200 rpm LD;

SAT code 094287 Tub 40 litres b5-cv5 40 litres 1200-1400 rpm;.

Models Serial number <30312.0001 and > 30616.0001.

Cod. SAT 092257 OUTER TANK & INNER DRUM ASSY B5 CV5

Cod, SAT 092263 OUTER- SET 46 L. CV5-B5 LD;

Cod. SAT 092545 OUTER TANK & INNER DRUM ASSY 40 L B5 CV5

CROSS ELEMENT ASSEMBLY AND SINGLE PARTS MANAGED AS REPLACEMENTS.

SAT code 096077 Cross element assembly with seal rings CV4;

SAT code 096186 Seal ring CV4;

SAT code 013563 Bearing 6205-2Z SKF;

SAT Code 002591 - Bearing 6204-2Z SKF;

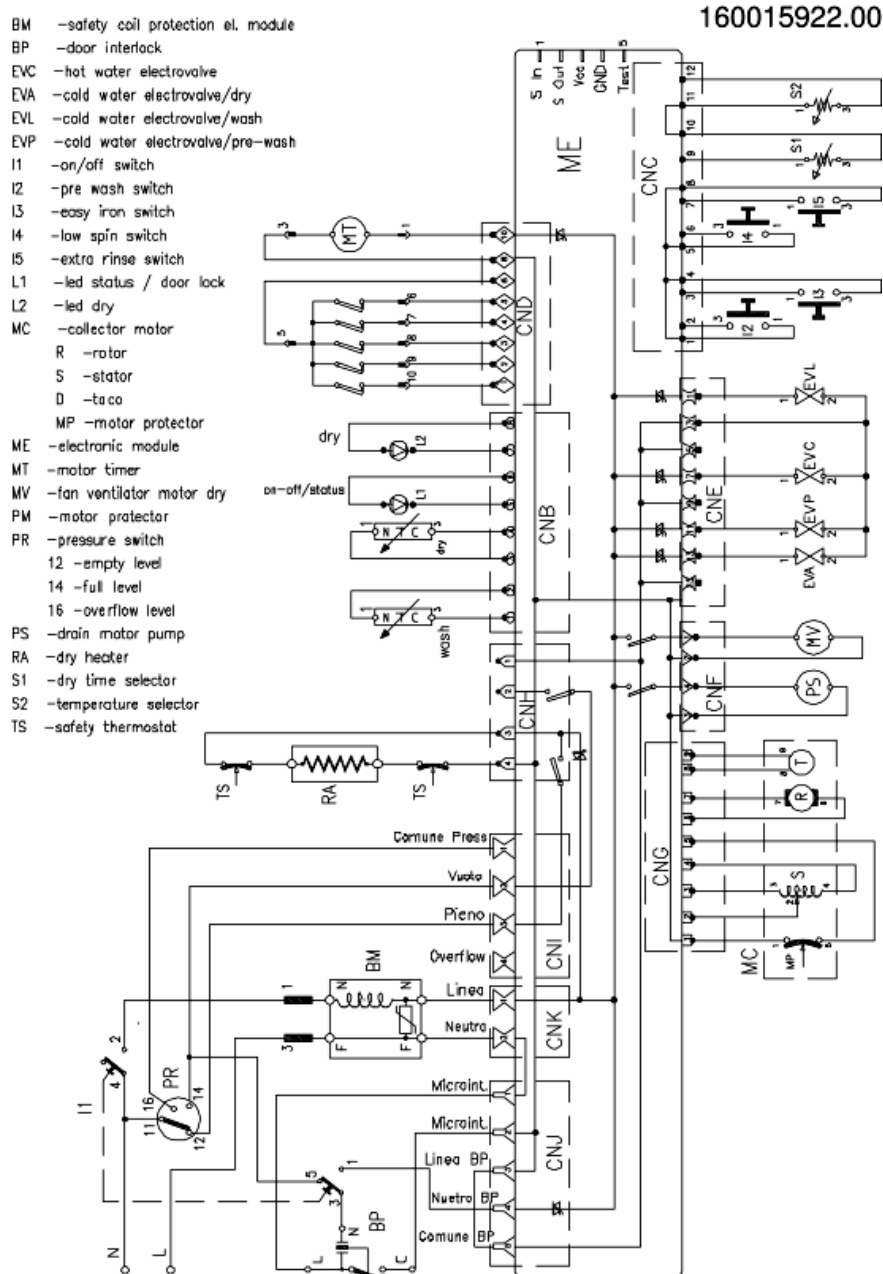
On 1200 rpm models, which indicate replacement of the drum with spider in aluminium, with a spider in red ghisa (LVA cod. C00094280 and LVB cod. C00094282), the following procedure will need to be followed:

- 1) Remove the upper counter-weight;
- 2) Position the balancing springs inside the support holes found further back than the previous position on the cabinet (see fig.001);
- 3) Affix the shock absorbers on the support holes positioned on the back part of the cabinet (see fig.002).



Electric schemes and links

Cod. 16001592200

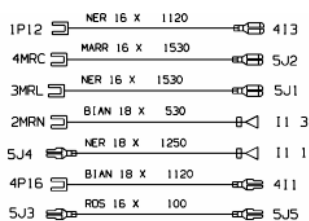
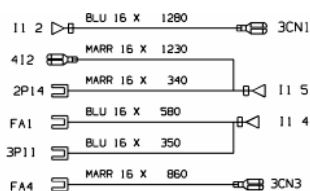


Legend

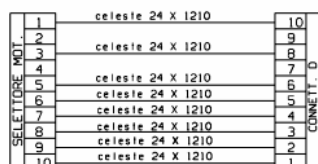
Legend: 16001592200

Electric schemes and links

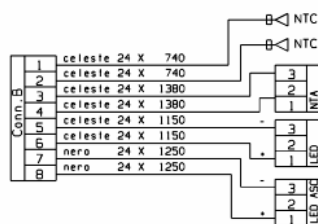
Cod. 16001813303



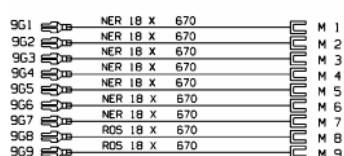
COMPRESSIVO A



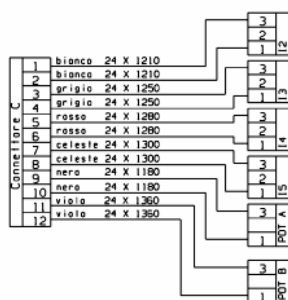
COMPRESSIVO B SELETTORE



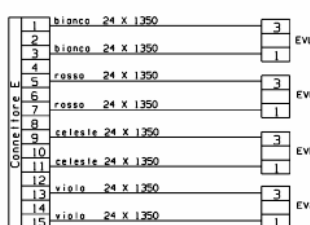
COMPRESSIVO C LED + NTC + NTA



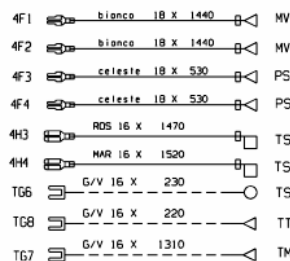
COMPRESSIVO D MOTORE



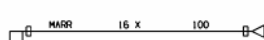
COMPRESSIVO E 2M+4 PULSANTI



COMPRESSIVO F CON EV ASC.



COMPRESSIVO H MOTOVENT. + POMPA LA



COMPRESSIVO I TF/RX Cod.160014608.00
MESSO IN SCATOLA VA CONSEGNATO ALLA DITTA MEP

16001813303

Legend

Legend: 16001813303